

CAPITOL THEATRE WINDSOR –PENTASTAR TECHNICAL PACKAGE

121 University Ave W, Windsor ON N9A 5P4.

Google Coordinates: 42.317031636837434, -83.04001609815778

CONTACTS:

Eric Tulp- Technical Director- technical@capitoltheatrewindsor.ca

Julia Galli- Theatre Manager- jgalli@capitoltheatrewindsor.ca

Front of House Manager- Gayle Allen- foh@capitoltheatrewindsor.ca

OVERVIEW:

The Capitol Theatre is a 1920 Heritage Theatre in Downtown Windsor, Ontario. Shared entrance/lobby space with 2 theatres (620 seats/200 seats) and flexible reception room.

Main Theatre: “The Pentastar”. 620 fixed theatre seats (500 main floor & 120 balcony). Please note balcony can only be accessed by stairs. All sight lines are unobstructed.

Mid-Size Theatre: “The Kelly”. 200 fixed theatre seats. Permanent film screen on stage.

Reception/Meeting Room: “The Joy”. 60-80 loose seating or standing.

PENTASTAR THEATRE - MAIN THEATRE

- 620 fixed theatre seats (500 main floor & 120 balcony)
- Large stage (curtain options available to reduce stage size)
- Lighting, audio, screen and projector (laser projector)
- 6 dressing rooms

STAGE AREA

DIMENSIONS:

- **Proscenium:** 48’ wide x 21’ high; stage is 30’ deep from proscenium to back wall
- **Wing Space:** Stage right wing 10’w x 30’d; Stage left wing 10’w x 30’d
- **Grid Height:** Stage deck to gridiron 44’
- **Stage Manager Station:** Located at stage right on stage. Equipped with 2 channel Clearcom, programme sound & paging system, and monitor video.
- **Intercom System:** 2 Channel Clearcom systems can be supplied to all production areas. 8 Wireless Comms Available on request.

POWER DISCONNECTS:

- Located USL - 100A 3 phase. Cam-Lock connectors, and direct power (bare lead tails) tie-ins require 2 weeks’ advance notice and will incur additional fees.

- 30/50-amp stove plugs. Upstage right and downstage left.

LOAD IN AREA:

- Entrance from Pelissier Street (one way heading north).
- Load in Door Opening Size: 5'11x10'. Enters on to stage right.
- See **Theatre Arrival** for details on load in and parking,

DRAPERY

- **Main House Curtain:** Red guillotine 25'x50'
- Manual line operation - for guillotine SR deck or SR fly gallery
- **Legs:** black velour - 3 sets: 23' x 10'
- **Traveler (s):** Black velour - 23' x 50', sewn in fullness
- **Cyclorama:** White 25' x 50'

LINE SET DATA

- **Working Height of Battens:** High Trim – 44'; Low Trim - 3'
- **Arbor Capacity:** Maximum load 1,000 lbs per pipe
- **Loading Gallery:** Loading gallery SR 50'
- **Fly Gallery:** Line sets operated from SR gallery; 24' above deck. Access from stairs SR.
- 3 linesets dedicated to roof panels
- Some lineset are limited in fly height due to roof panels.

SUPPORT AREAS

- **Crossover:** Understage
- **Access:** From audience - SL & SR stairs from front of house – backstage down 1 flight of stairs
- **Green Room:** Located on the second floor, stage left. It seats 15 people, has 2 bathrooms.

LIGHTING

- **House Lights:** Controls located in the Lighting Control Booth, and back of house.
- **Control:** Electronic Theater Controls EOS, edmx nodes
- **Dimmers:** ETC dimmers, 98ch
- 36 Chauvet Q12 Led Pars
- 7 Chauvet Q15 Led Battens
- 8 Rx2 Moving wash
- 4 Maverick ForceSSpot Moving head
- 18 Source4 Foh Lekos
- 12 Source4ward Led Lekos
- 34 onstage source4s

AUDIO

HOUSE SPEAKERS

- 16 Dual 10" active line array boxes -JBL SRX910LA
- 3 single 18 Jbl VTb18 Passive Subwoofers
- **Stage Infills:** 2 UAW's

STAGE MONITORS

- 6 - TurboSound IQ12

MICROPHONES

- 4 - Beta 58
- 2 - Beta 57
- 1 - Shure 58
- 2 - Shure 81
- 2 - PZM floor mics
- 3 - Shot gun mic
- 4 - Sennheiser E604s
- 10 - Sennheiser EW-DX EM4 wireless handhelds (fees may apply)

MISC

- 5x Radial DI Boxes
- 3x Radial Pro Dual DI boxes

PROJECTION + VIDEO

- Epson LCD laser projector- L1505UHNL 12,000 Lumens
- Stage Cyc 20'x44'
- 4:3 front projector screen
- Live video monitoring - Stage Left, Stage Right, Main lobby, and in all tech spaces.
- 5 Hd 1080P PTZ cameras Available for use (fees may apply)

THEATRE ARRIVAL

Welcome to the Capitol Theatre!

Stage door/loading area: Located on Pelissier St. (a one-way street heading north). Stage door is located approximately in the middle of the block, where the theatre meets the condo behind it.

View of stage door (black) and loading dock (blue) from Pelissier Street:



Loading dock (opening Size: 5'11x10'. Enters on to stage right)

Stage door (average door size)

The Capitol does not own a parking lot and does not provide assigned parking spaces for renter/crew/cast use. Vehicles are permitted to stop at the stage door/loading dock for loading and unloading only.

For parking, please download the City of Windsor Parking App (Passport) or visit <https://www.passportca.com/park/> for quick pay options with credit card.



Availability and quantities of listed equipment, line sets, configurations, features, and add-ons may vary. Please confirm your production needs with the Technical Director for the most recent updates and availability of items. Updated January 2025.

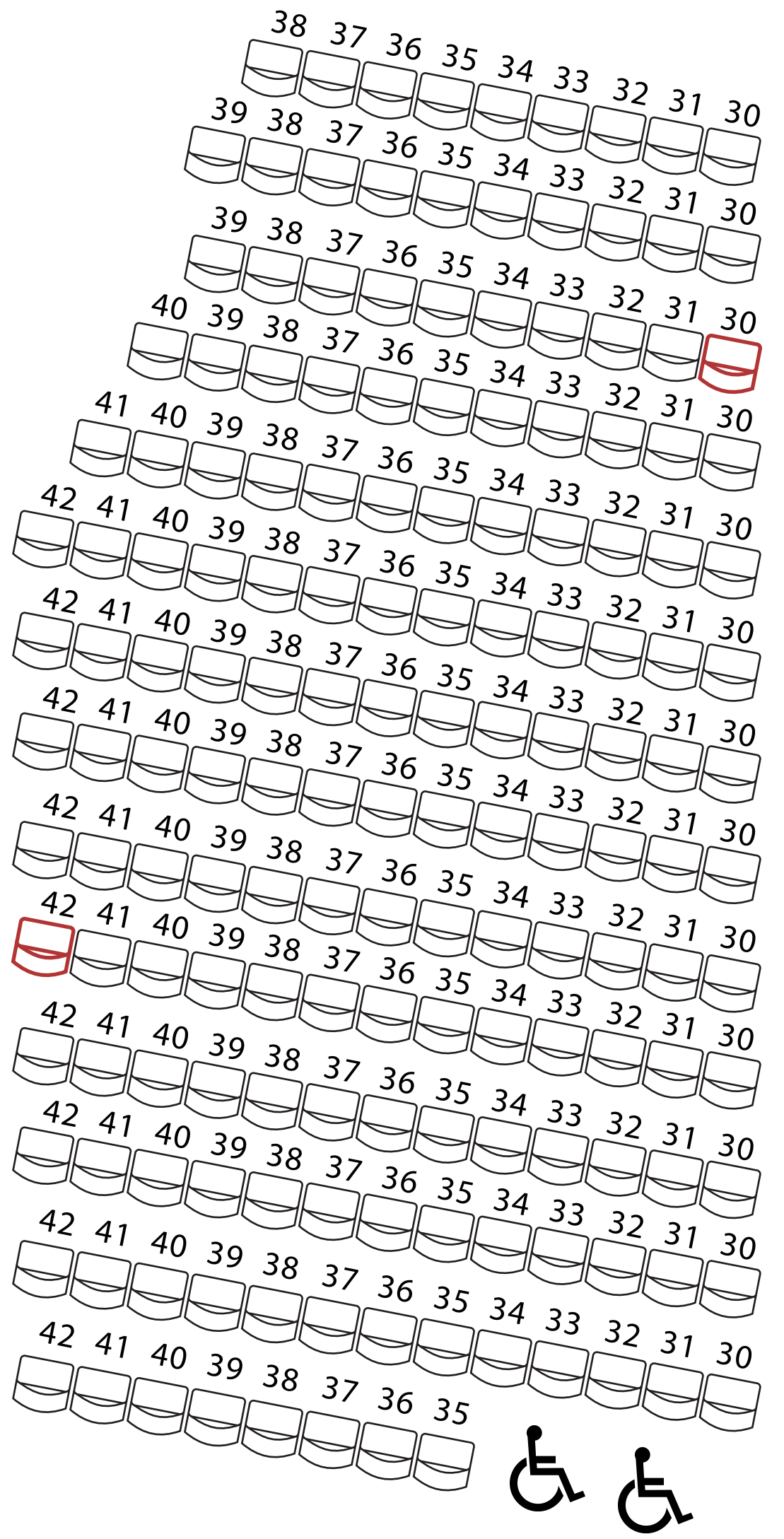
ACCESSIBILITY

Wheelchair spaces are accessible in all three theatres. The Capitol Theatre main entry (University Ave) is located at ground level and is equipped with ramps and inclined floors.

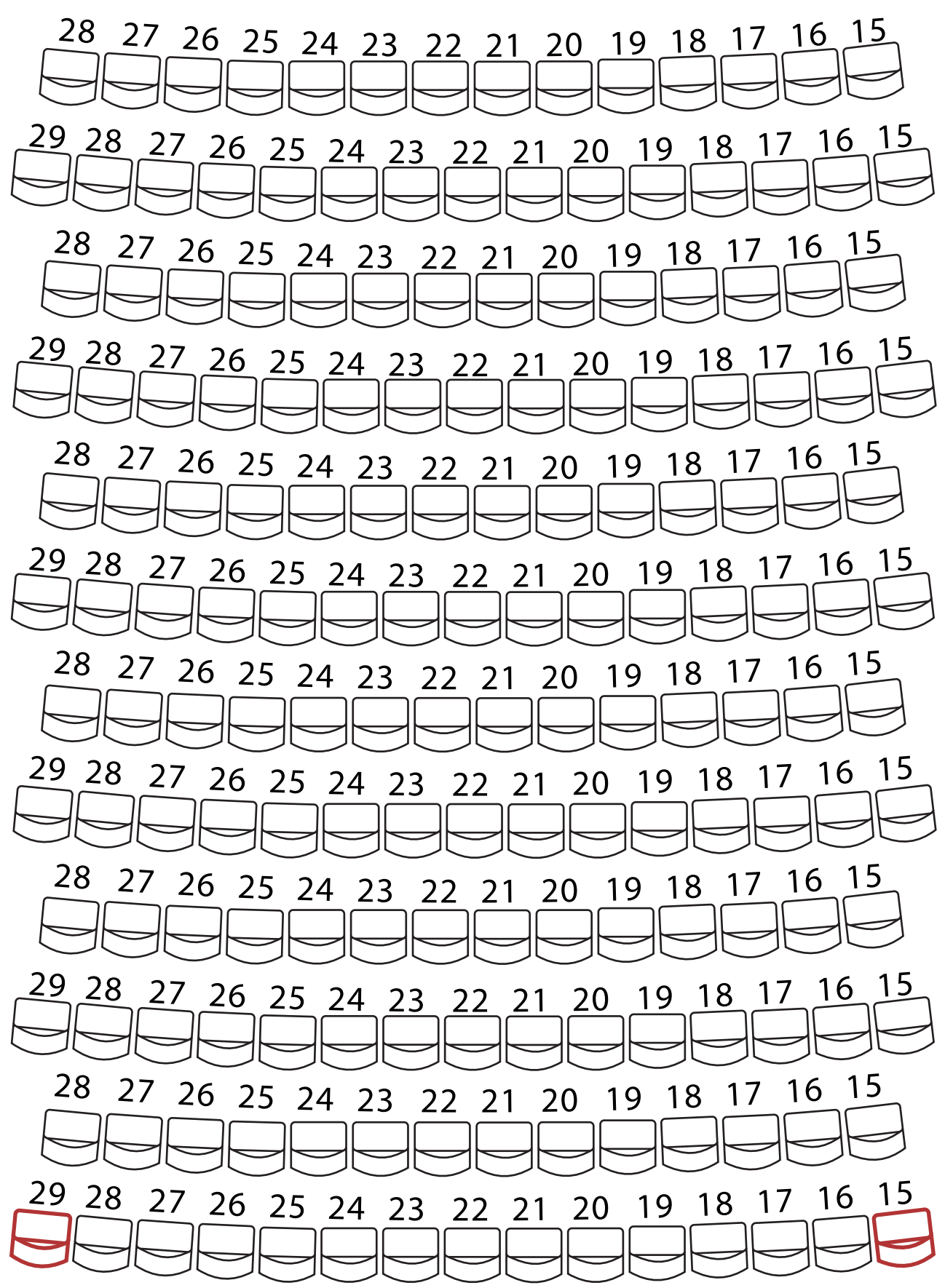
The Pentastar theatre can accommodate standard sized manual and electric wheelchairs in the back row of house right. These spaces are limited, please contact the box office to inquire about availability. Pentastar balcony is only accessible by stairs.

The Kelly Theatre can accommodate standard-sized manual and electric wheelchairs in the back right section of the theatre. These spaces are limited, please contact the box office to inquire about availability.

Please note that as a Heritage space that has limited modernizations, certain accessibility accommodation may not be possible. For more information about the accessibility of the Capitol Theatre, please contact admin@capitoltheatrewindsor.ca.

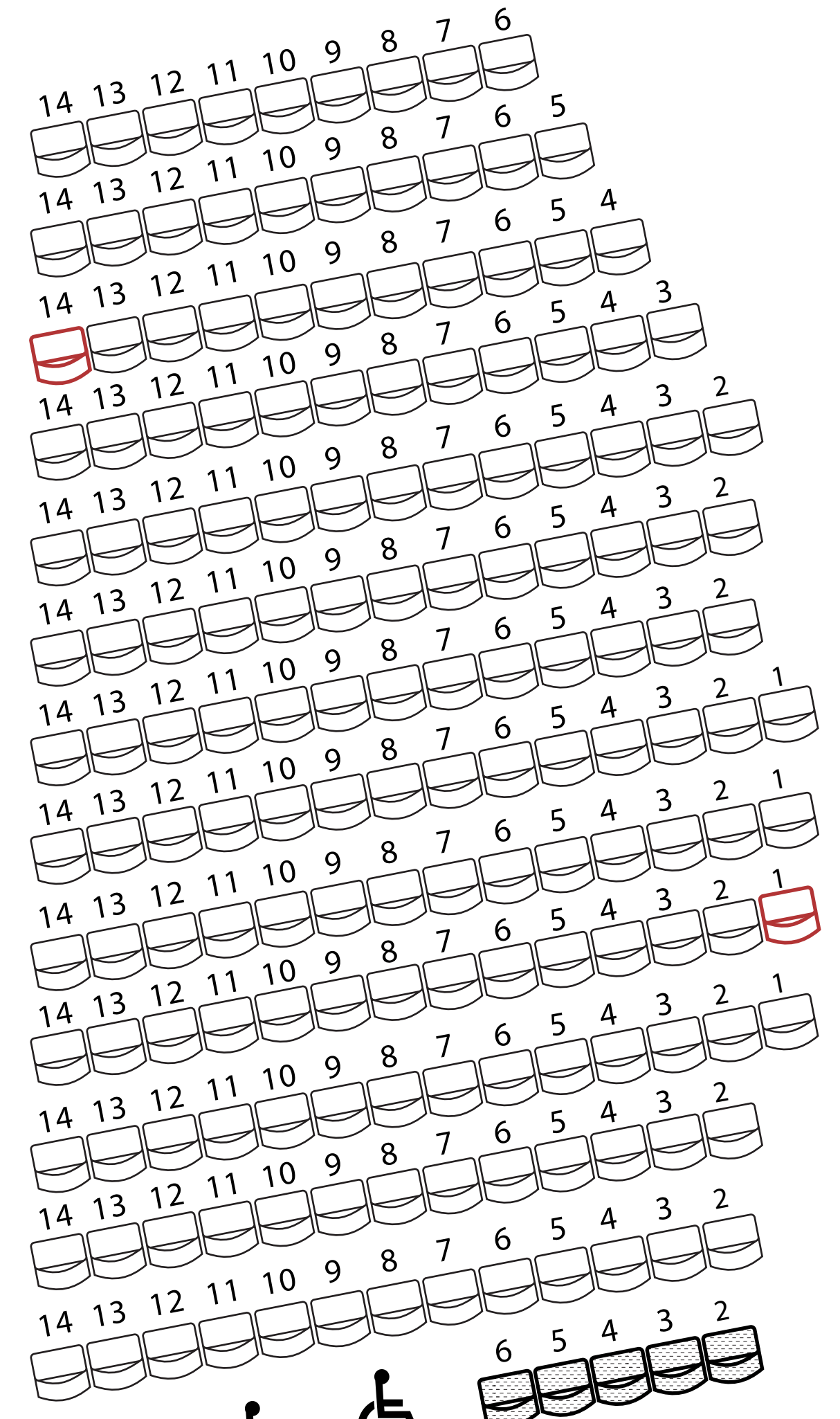


A
B
C
D
E
F
G
H
I
J
K
L
M
N

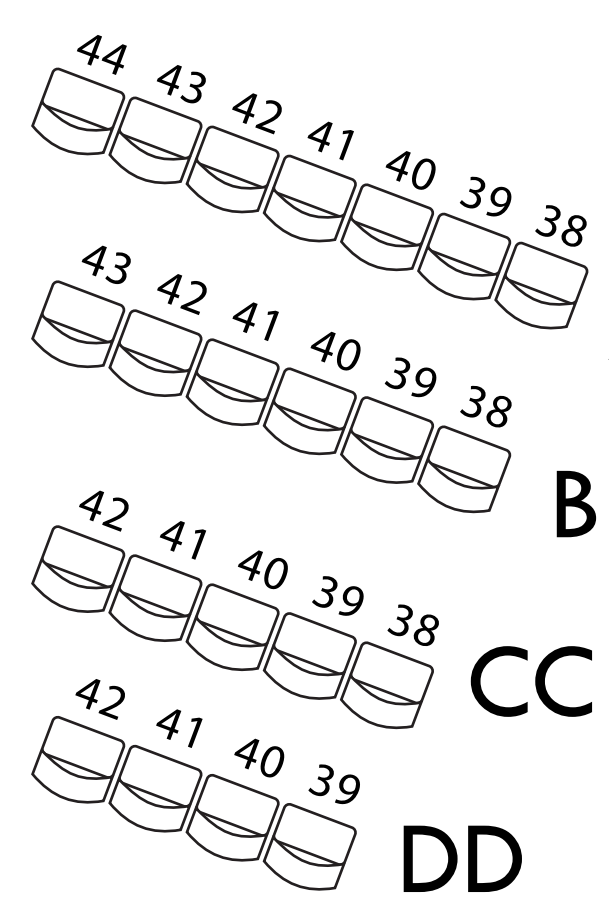


Main Floor

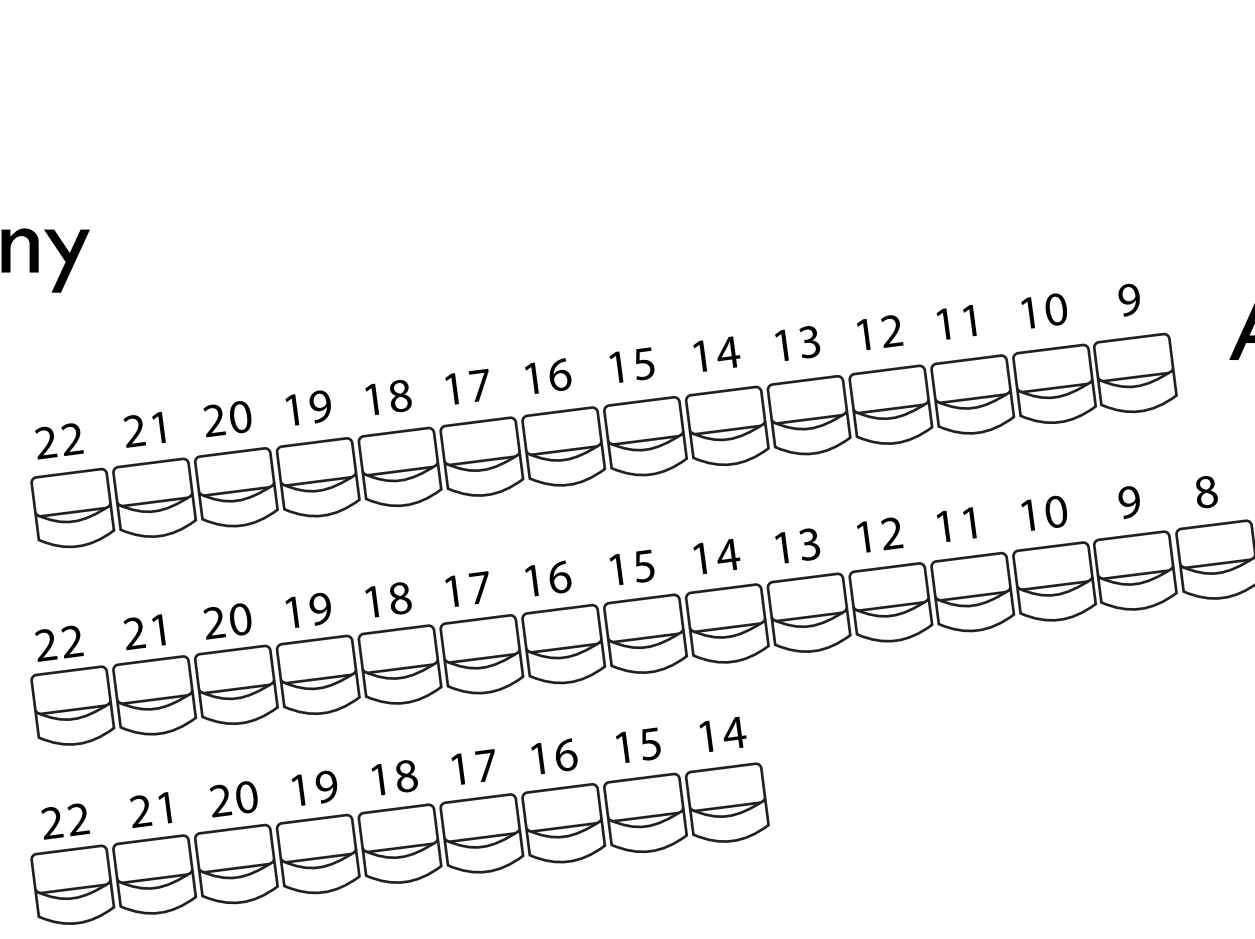
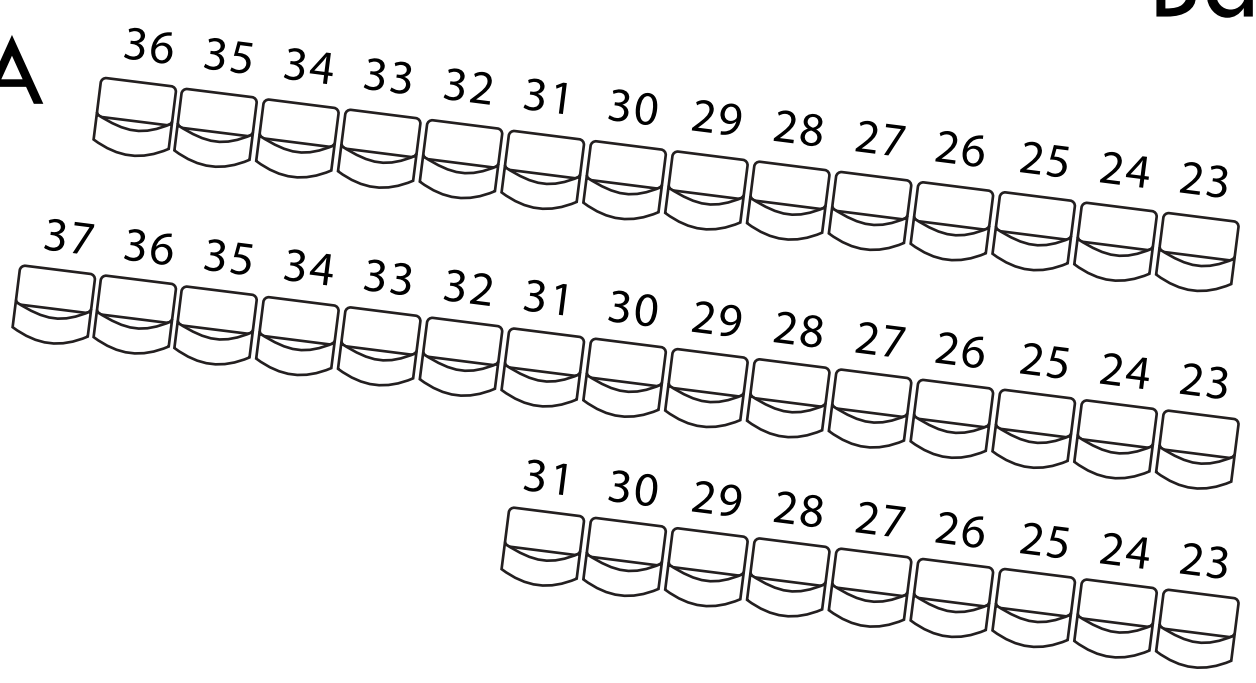
A
B
C
D
E
F
G
H
I
J
K
L
M
N



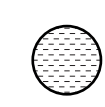
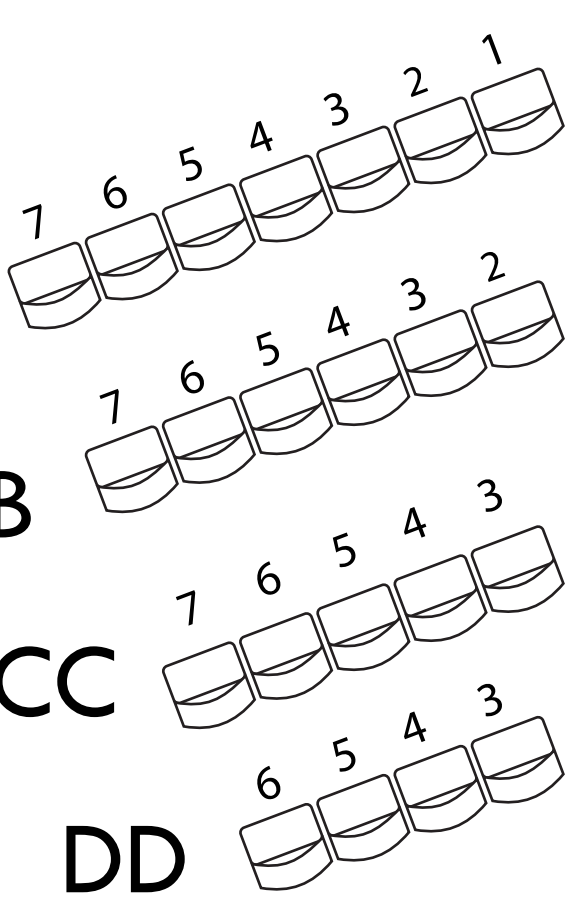
Balcony

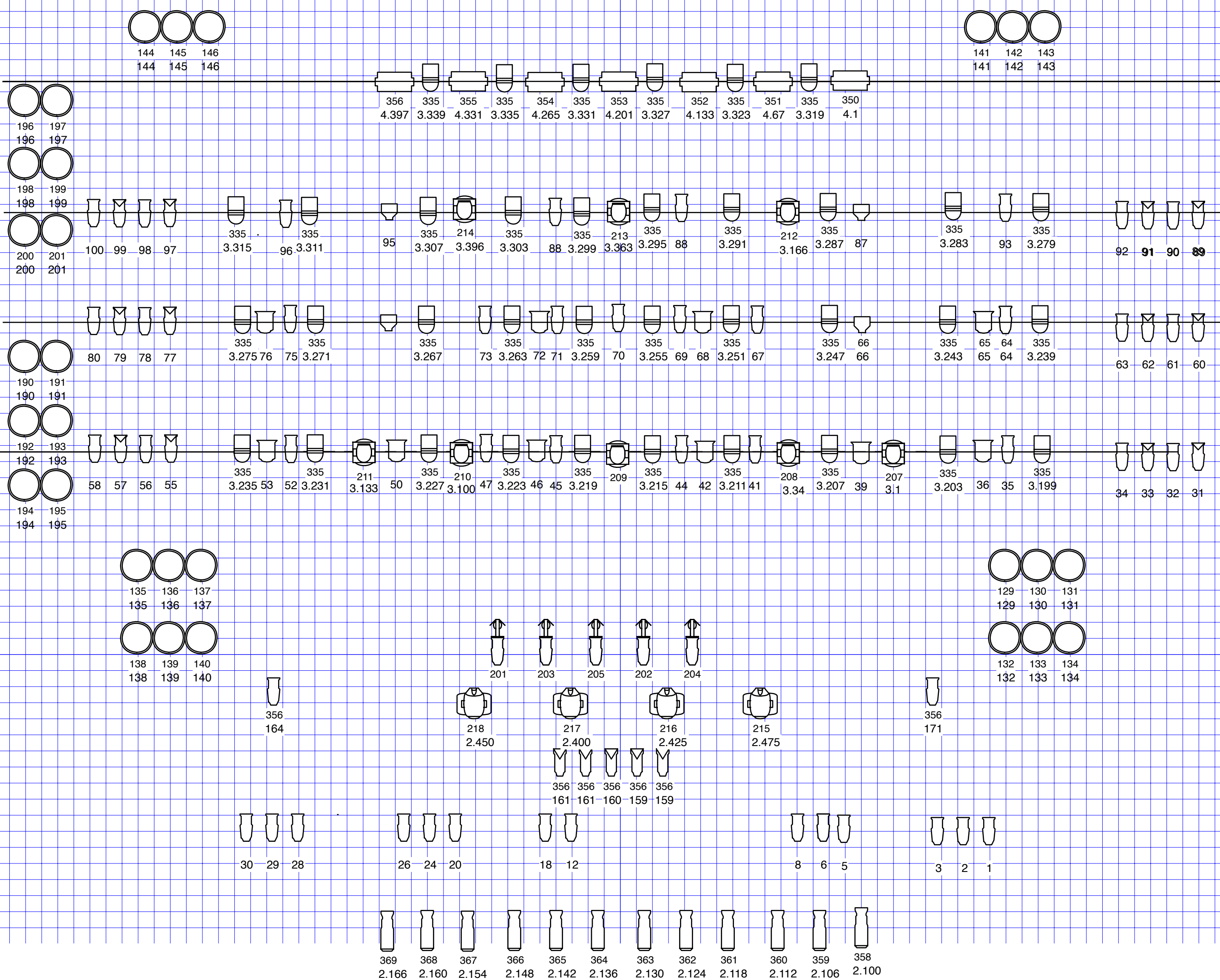


AA
BB
CC
DD



AA
BB
CC
DD





Key

Channel Address

- 36° Source Four
- 50° Source Four
- 50° Source Four
- SOURCE 4 PAR
- CHAUVET Q15 LED BATTON
- 1K FRESNEL
- CHAUVET Q3 LED PAR
- CHAUVET FORCE S SPOTS
- CHAUVET RX 2
- I-cue
- ONSTAGE POWER
- 50°/36° Source FourWARD

Light Plot

Base venue plot

Venue:
- The Pentastar Theatre

Designer:
Eric Tulp

2024-09-03

